

STEX ADVANCED DESIGN BUREAU - ARCHO WORKS [Advanced Home Architecture] All intellectual property rights Reserved.

STEX ADVANCED DESIGN BUREAU
WWW.STEXINTERNATIONAL.COM

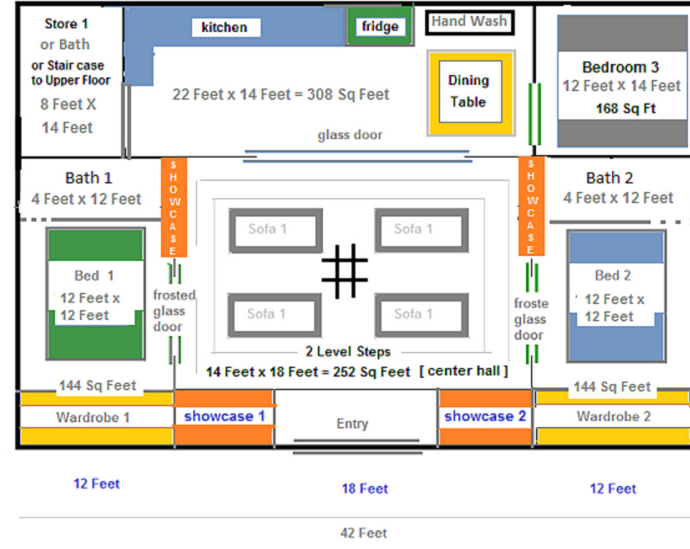
STEX ADVANCED DESIGN BUREAU
WWW.STEXINTERNATIONAL.COM

STEX ADVANCED DESIGN BUREAU - ALL Rights Reserved

Housing Architecture - Model A - 1260 Sq Feet + 756 Sq Feet = 2016 Sq Feet 5 Bedroom Configuration
on an approx 1260 Sq Feet Foundation

STEX ADVANCED DESIGN BUREAU - Home Architecture [42 Feet x 30 Feet] Home - 1 Floor or 2 Floor House

1260 Feet Ground Floor



1 Floor - 3 Bedroom
2 Floor - 5 Bedroom

Building side View

756 SqFeet (42 feet x 14 +4 Feet)

Top Floor 2 Rooms



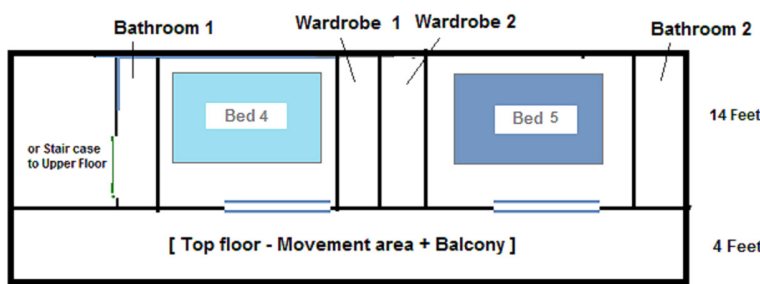
Bottom Floor 3 Rooms + centre room + Dining/Kitchen

1260 Feet Ground Floor

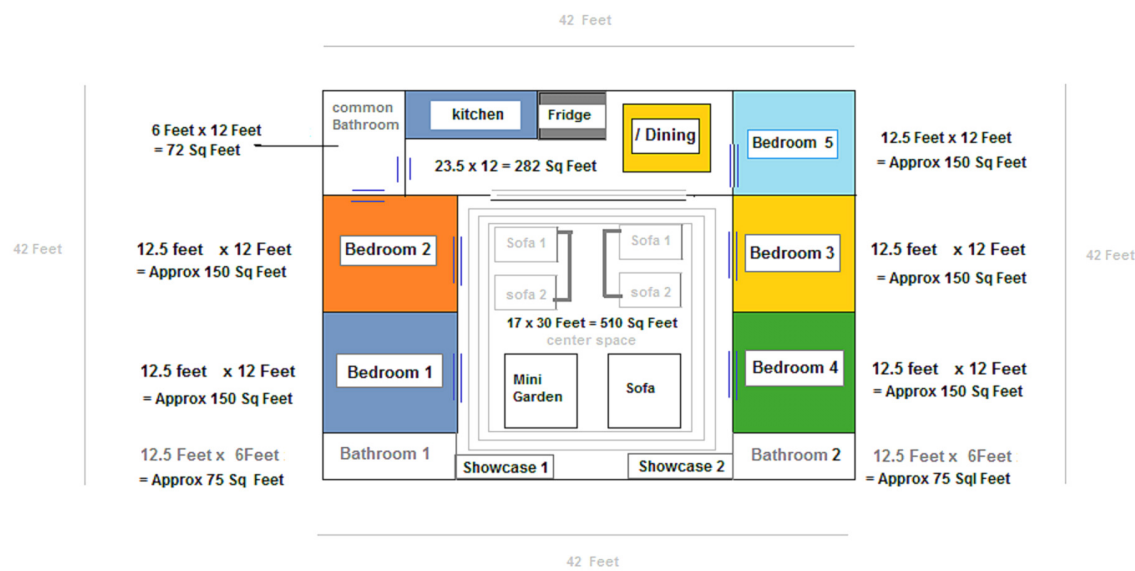
Total Size :

1260 Sq Feet + 756 Sq Feet = 2016 Sq Feet
on an approx 1260 Sq Feet Foundation

Top Floor - design 14 Feet x 34 Feet (2 rooms) – Right above the Dining Hall & Kitchen space on Floor 1

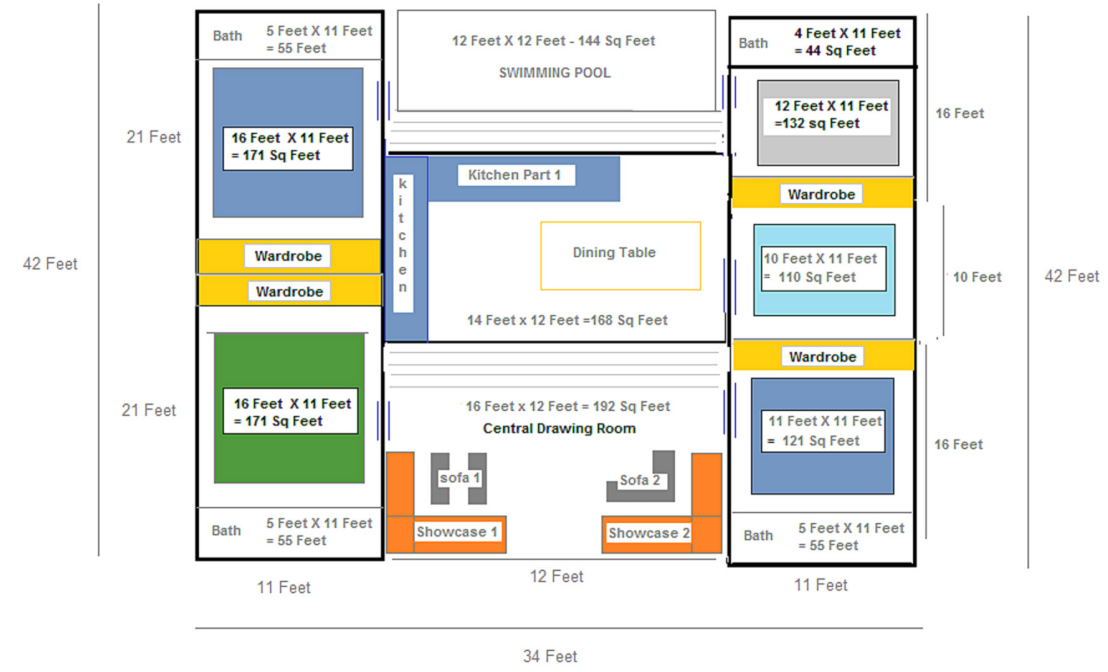


Variant 2: A 42 Feet x 42 Feet - Single Ground Floor House : 1764 Sq Feet – 5 Bedroom Configuration



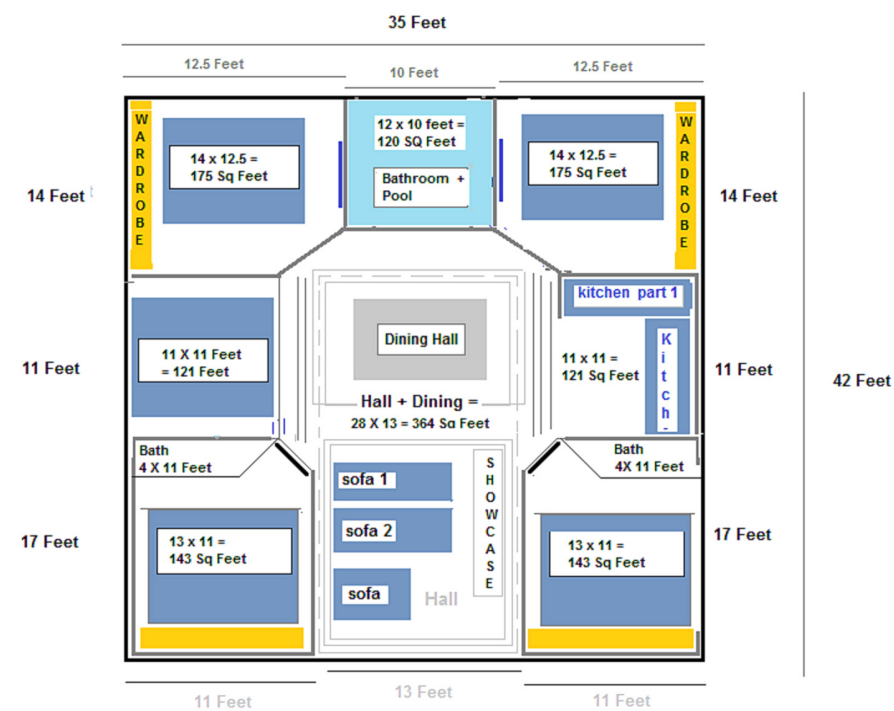
STEX ADVANCED DESIGN BUREAU - ALL Rights Reserved

Housing Architecture - Model II [Type H] - 42 Feet X 34 Feet = 1428 Sq Feet
[Configuration : 5 Bedroom + Swimming Pool] : For Homes /Resorts/Hotels



Note in this configuration the Central Drawing Room can be Made 18 Feet x 12 Feet = 216 Sq Feet
The Kitchen can be made 16 Feet x 12 Feet = 192 Sq Feet
And the swimming pool size can be reduced to 8 Feet x 12 Feet = 96 Sq Feet [This approach is called Freescaling].

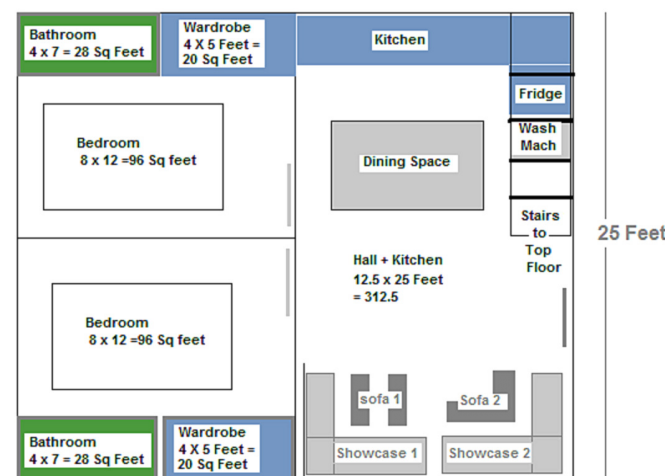
Variant - II 42 X 35 FEET = 1470 Sq Feet [5 Bedroom + Pool]



STEX ADVANCED DESIGN BUREAU - All IP Rights Reserved

1250 Sq Feet : [Duplex House : 5 Bedroom + Hall + Kitchen]

625 SQ FEET - Ground floor
[2 BEDROOM + HALL + KITCHEN]



625 SQ FEET - Top Floor
[3 BEDROOM + STORE]

